

-Birdman- Sculpture by Salvador Dali

Reference:

MPD-007708

Description

Bronze sculpture on marble base.

The theme of the birdman comes from antiquity. In ancient Egypt, this figure appeared as Horus, a God with a man's body and the head of a heron. Dalí combines two incongruous parts substituting the head of a human figure with the head of a heron, making the human half bird and the bird half-human. You can not distinguish which of the two is dominant. Man is not always that which he appears, Dalí wants to leave us in doubt, it is his game. The smooth polished surface of the sculpture's body is contrasted by the naturally unworked beak and head.

Signed on the bottom.



Main Image:

DetailsPeriod: MID-CENTURY MODERN

Category: Sculptures

- Height: 8 1/2

Dealer: Modernism Xchange

phone: 305 542 1967 (Michelle)

Email: msiegel3000@yahoo.com

Located In Miami, FL

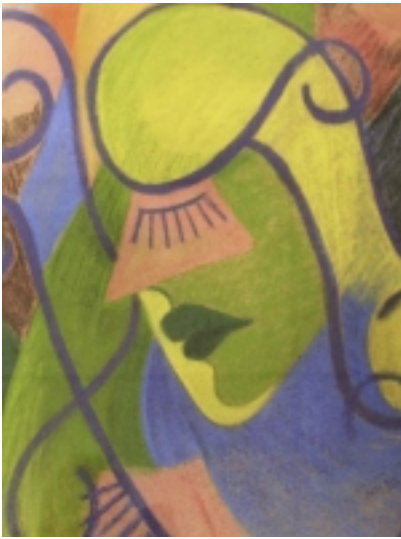
More InfoDesigner: Salvador Dali

Recently Viewed

- [Betty Ball Futurist Pastel American Dated 1949](#)

Modernism Exchange

Modernism Xchange



- [Blogs](#)
- [Shows](#)
- [News](#)
- [Shipping](#)
- [FAQ](#)
- [SiteMap](#)
- [About Us](#)
- [Terms](#)
- [Login](#)

- [Betty Ball Futurist Pastel American Dated 1949](#)