

1939 World's Fair Saturn Lamp By Leon Houze

Reference:

MPD-007247

Description

Vintage and classic Art Deco lamp from the New York World's Fair (1939-1940).

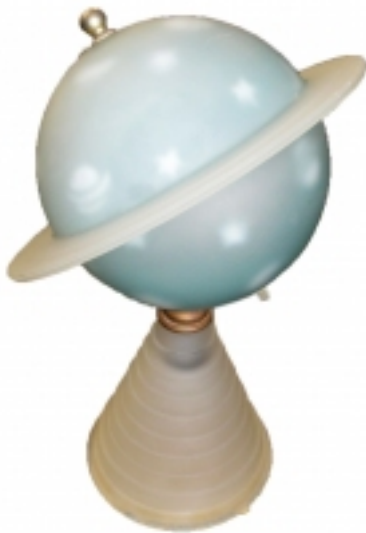
The planetary lamp, designed to be used on a desk or small table, was made by the L.J. Houze Convex Glass Co., founded in 1914 at Point Marion, Pennsylvania, by Leon Houze and his son, Roger. The lamp is one of the special "Saturn" souvenir lamps Houze designed especially for and sold at the 1939 World's Fair held at Flushing, New York. Offered in a number of pastel shades to the show's more than 44 million visitors from April 1939 to October 1940.

This example is a beautifully luminescent blue frosted glass Saturn Lamp on white frosted conical skyscraper base, angled, round planetary top and bottom. All original in very good to excellent condition especially considering its age (the power cord has been replaced with a period appropriate silk cord). No chips or cracks. Lamp top and bottom fit snugly together.

The half round blue Saturn top and bottom are both accented with white frosted Stars, Moon, and Saturn with white frosted Saturn ring accent. With brass parts. Original on/off switch at bottom of lower section. Playful and magnificent when lit!

Price:

\$1,500.00



Main Image:

DetailsPeriod: ART DECO

Category: LIGHTING

Condition: Very good to excellent original condition

- Height: 12

Diameter: 8

Dealer: Deco-Dence Gallery & Studio

Dallas Design District

2260 Monitor Street

Dallas, TX 75207-6204 USA

214-744-DECO (3326) - Gallery

214-789-DECO (3326) - cell

More InfoCountry of Origin: United States

Material/tecniques: Blue frosted glass, clear frosted glass, brass, silk cord



Deco-Dence Gallery and Studio