

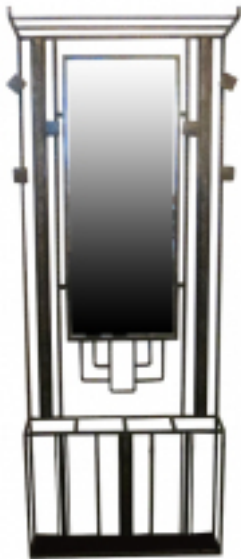
French Art Deco Hand Wrought Iron Hall Tree

Reference:

MPD-001119

Description

This French Art Deco hall tree is of hand wrought iron and is from the 1930's. The tree has a rack on top for hats, four hooks for coats, a mirror and space at the bottom for umbrellas and canes. The hall tree is 75 1/4" high, 28" wide and 5 3/4" deep.



Main Image:

DetailsPeriod: ART DECO
Category: FURNITURE

Condition: Excellent

- Height: 75 1/4

- Width: 28

- Depth: 5 3/4

Dealer: Modernism Gallery

More InfoCountry of Origin: France

Material/techniques: wrought iron and mirrored glass, beveled

MODERNISM GALLERY
French & American Art Deco

Modernism Gallery

